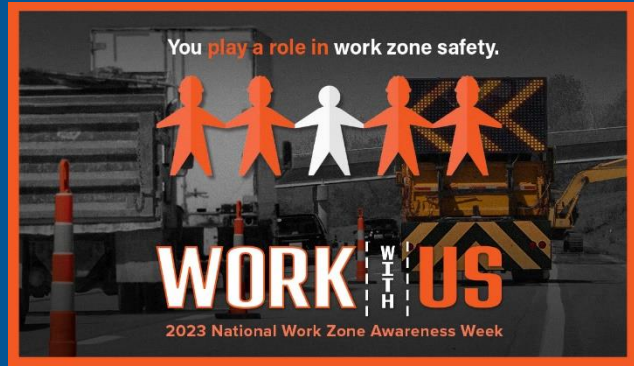


National Work Zone Safety Awareness Week



Fact Sheet

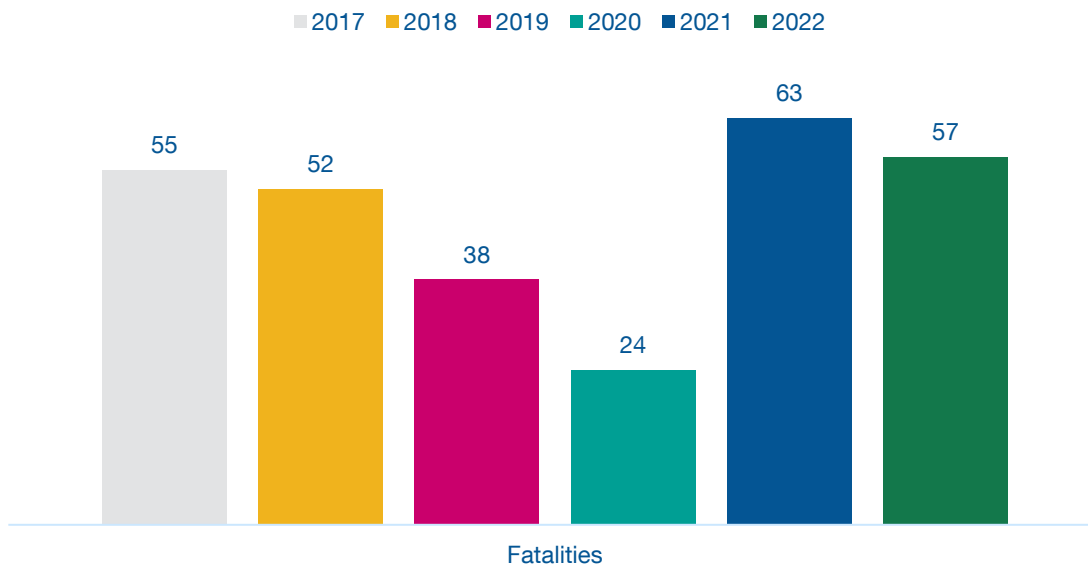
Whether you work in an office or on the road, everyone deserves to get home safely. The 2023 theme for Work Zone Safety Awareness Week— **Work with Us — You play a role in work zone safety** — reminds travelers that keeping everyone safe, whether traveling in a vehicle or working alongside the roadway, safety is a shared responsibility.

While most may work in the safety of an office with walls, others work amid the real dangers of roadway work zones. And it is not only workers who are in peril - most victims in work zone crashes are drivers or passengers.

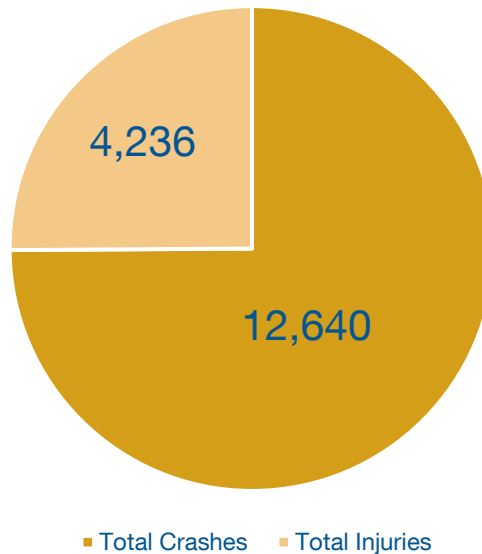
Georgia DOT and Work Zone Safety

- **Since 1973**, when record-keeping began, **more than 61 Georgia DOT employees and contractors** have died in work zone-related incidents.

Fatalities in Georgia Work Zones



Total Crashes/Injuries in Georgia Work Zones 2022



- **Roadway departure and rear-end crashes** accounted for **52 percent of work zone crashes**. Both are associated with distraction, driving too fast for conditions and driver impairment.
- There were **8 fatalities involving commercial motor vehicles** and **12 pedestrian-involved fatalities** in Georgia work zones.

Tips for Approaching and Driving in Work Zones

- **Drive Safe. Work Safe. Save Lives.** Obey the rules of work zones and be aware of construction vehicles entering or exiting the roadway.
 - Pay attention.
 - Slow down (even in lighter than normal traffic.)
 - Watch for workers and when possible, move over to provide a buffer lane between the work zone and your vehicle.
- **Expect the Unexpected.** Things may change quickly. Normal speed limits may be reduced, traffic lanes may be closed, narrowed, or shifted, and people may work on or near the road.
- **Slow Down.** Don't Tailgate. Speed is a factor in many accidents. Keep a safe distance between you and the car ahead of you, and the construction workers and their equipment.

- **Obey Road Crew Signage** and pay attention to signs. Failure to obey speed limit signs or a flagger's traffic control directions can result in hefty fines and/or imprisonment.
- **Stay Alert and Minimize Distractions.** Pay full attention to the roadway and avoid changing radio stations or using cell phones and other electronic devices.
- **Keep Up with Traffic Flow.** Do not slow down to gawk at road work.
- **Know Before You Go.** Expect delays, leave early and schedule enough time to drive safely. For 24/7 real-time traffic information, call 511 or visit www.511ga.org before you get into the car. And follow Georgia DOT on Twitter for additional updates.
- **Be Patient, Stay Calm.** Crews are working to improve the road and to make your future drive better.
- **Wear Your Seatbelt.** It is your best defense in a crash. And make sure your passengers are buckled up.
- **Watch Your Speed.** Never drive too fast for conditions or impaired by drugs, alcohol or sleeplessness, whether in a work zone or anywhere else.

Work Zone Safety and Georgia Driving Laws

Distracted driving is a root cause of many crashes, and this especially applies in work zones. In addition to DUI and impaired driving laws, Georgia driving laws include:

- **Drivers, put down the phone.** Georgia's **Hands-Free Law** requires hands-free technology when drivers use cell phones and other electronic devices. Drivers may not hold a phone in their hand or use their body to support a phone, meaning it cannot sit in your lap.
- **Move over for stopped emergency vehicles.** Georgia's **Move-Over Law** requires drivers to move over one lane, if possible, when approaching stationary highway maintenance and construction workers, HERO and CHAMP operators, law enforcement or emergency vehicles, firefighters, paramedics, tow truck operators and utility service vehicles flashing emergency lights. If it unsafe to move over, slow down below the posted speed and be prepared to stop.
- **Buckle up.** Georgia law currently requires that front seat passengers wear a safety belt, GDOT recommends that all occupants buckle up, especially in the back seat. In a crash, an unrestrained passenger can injure or kill another occupant.

For more information about work zone safety, to download the national poster and to find interactive learning activities, visit [Work Zone Safety Program - GDOT \(ga.gov\)](http://WorkZoneSafetyProgram-GDOT.ga.gov)

National Work Zone Safety resources include:

- American Traffic Safety Services Association - [ATSSA](#)
- [NATIONAL WORK ZONE AWARENESS WEEK APRIL 17-21, 2023 - Home \(nwzaw.org\)](#)
- This year's host state – Missouri DOT - [Work Zone Awareness | Missouri Department of Transportation \(modot.org\)](#)
- National Highway Traffic Safety Administration - [NHTSA | National Highway Traffic Safety Administration](#)
- Center for Construction Research and Training - [CPWR | Struck-By Hazards](#)